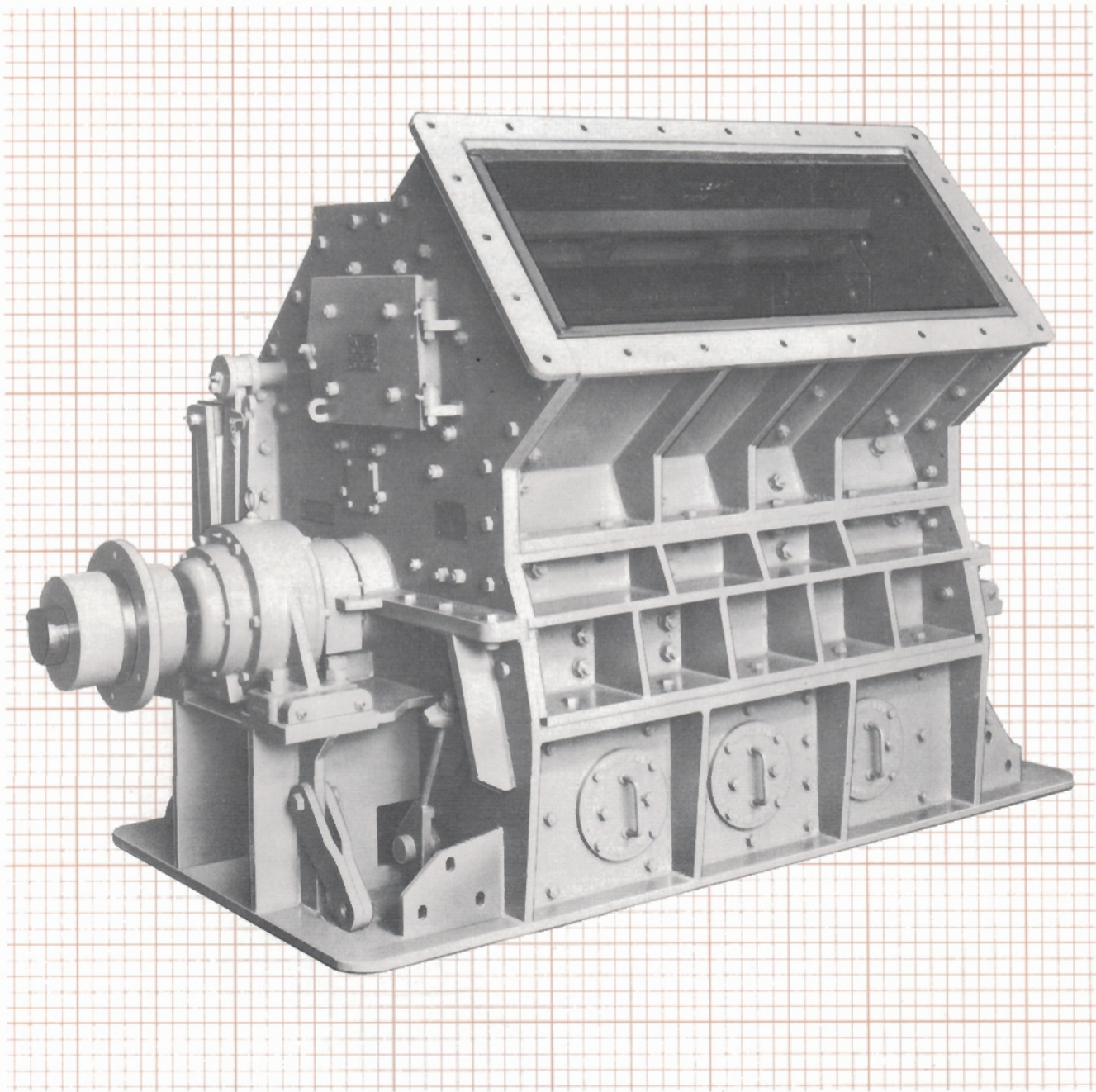


No.5 Side Feed



MANSFIELD HAMMER CRUSHERS

MANSFIELD No.5 SFXL HAMMER CRUSHER

DESIGNED FOR SECONDARY DUTY HANDLING A
FEED OF UP TO 250mm THICK, SLABBY MATERIAL.

Power requirements. Depending upon feed material and crusher setting; typically between 150kW and 300kW. Power unit, diesel or electric, direct coupled or indirect.

Mainshaft speeds. Speed range 350 r.p.m. to 800 r.p.m. depending on product required.

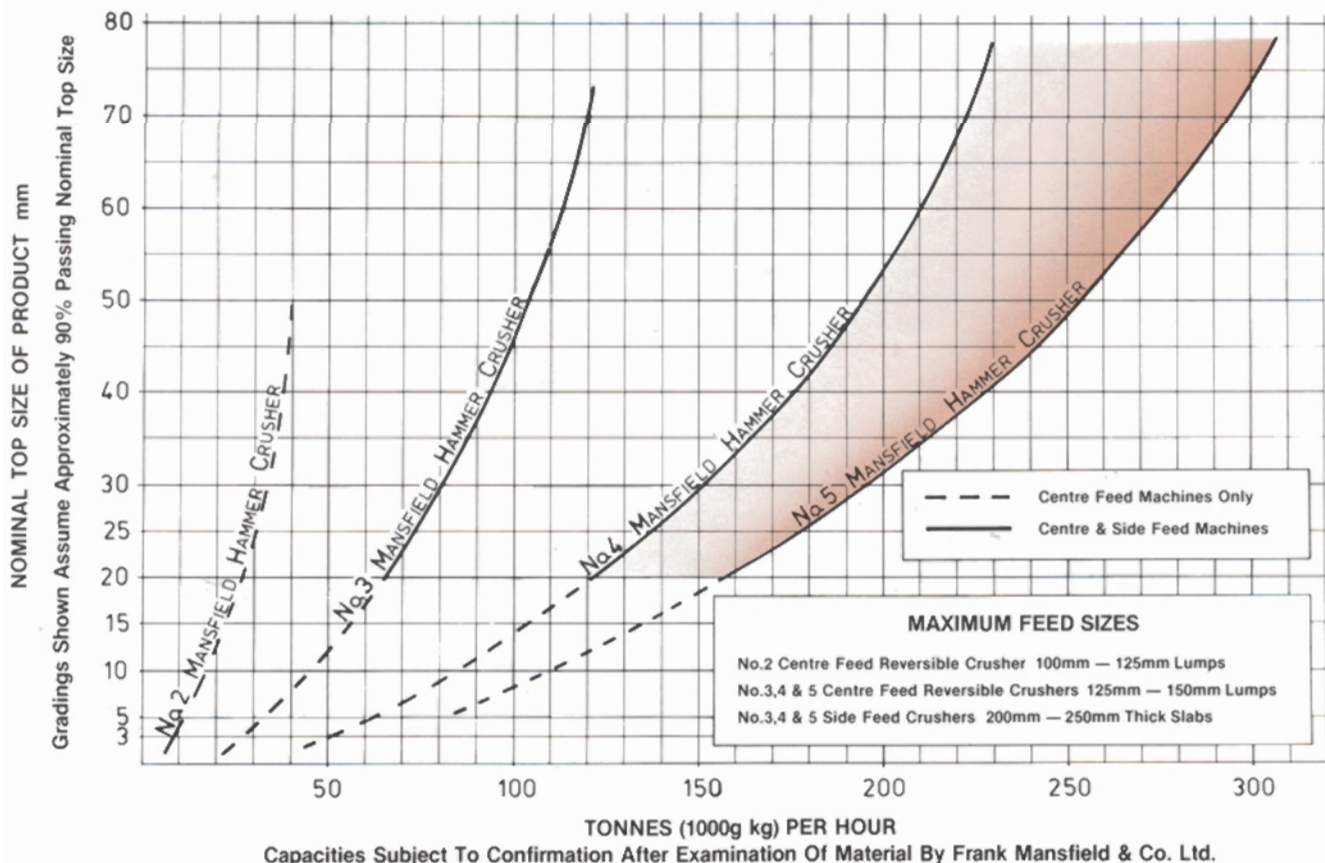
Indirect Drive:- Heavy duty wedge belts with solid plate centre pulleys recommended.

Optional Extras:

- 1) Adaptor Boss type wedge belt drive with interchangeable pulley rims.
- 2) Electrical or mechanical variable speed drives for frequent changes of product.
- 3) Solid state under speed alarm to monitor crusher speed.
- 4) Solid state auto feed load control.
- 5) Heavy duty feed and discharge chutes.
- 6) Supporting structures, mobile or static.

- Front cover illustrates typical No.5/SFXL Mansfield Hammer Crusher. The adaptor boss fitted is an optional extra.

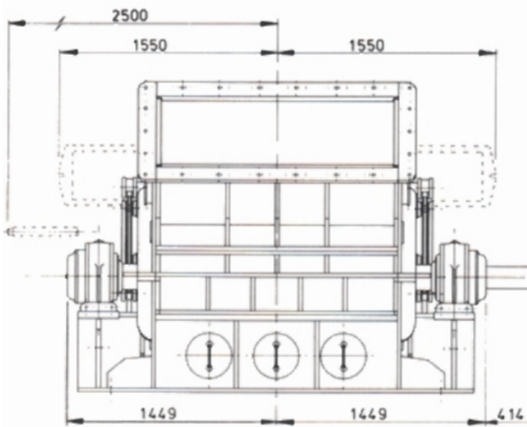
APPROXIMATE CAPACITIES WHEN CRUSHING LIMESTONE



FOUNDATION PLAN

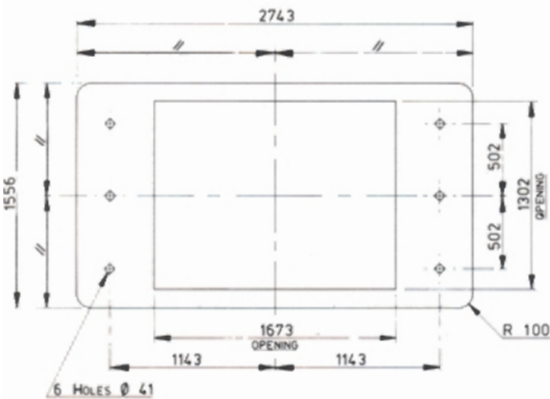
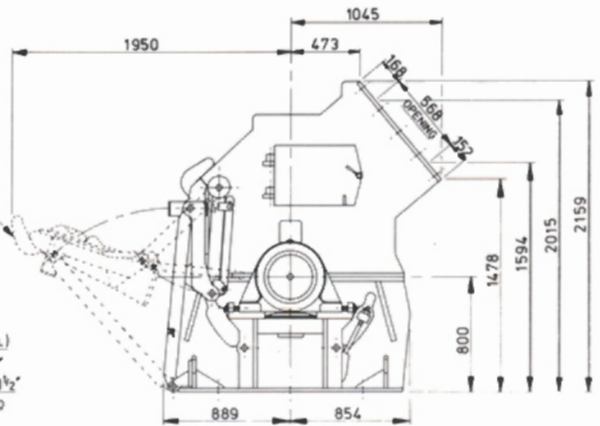
APPROXIMATE WEIGHT 14 TONNES DEPENDING ON SETTING USED

HAMMER SHAFT REMOVAL CLEARANCE

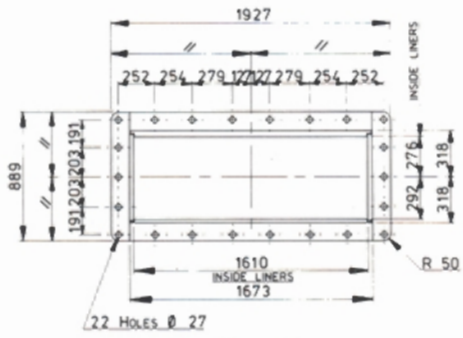


CLEARANCE TO MANUALLY OPEN THE END PLATE FOR MAINTENANCE ACCESS

SHAFT DETAILS (IMPERIAL)
DIAMETER 6.000" - 6.001"
KEYWAYED TO SUIT AN 1 1/2" WIDE RECTANGULAR KEY TO B.S. 46-1-1929



PLAN ON BASE



HOPPER FLANGE DETAIL

TYPICAL ARRANGEMENT WITH FEED & DISCHARGE CHUTES

