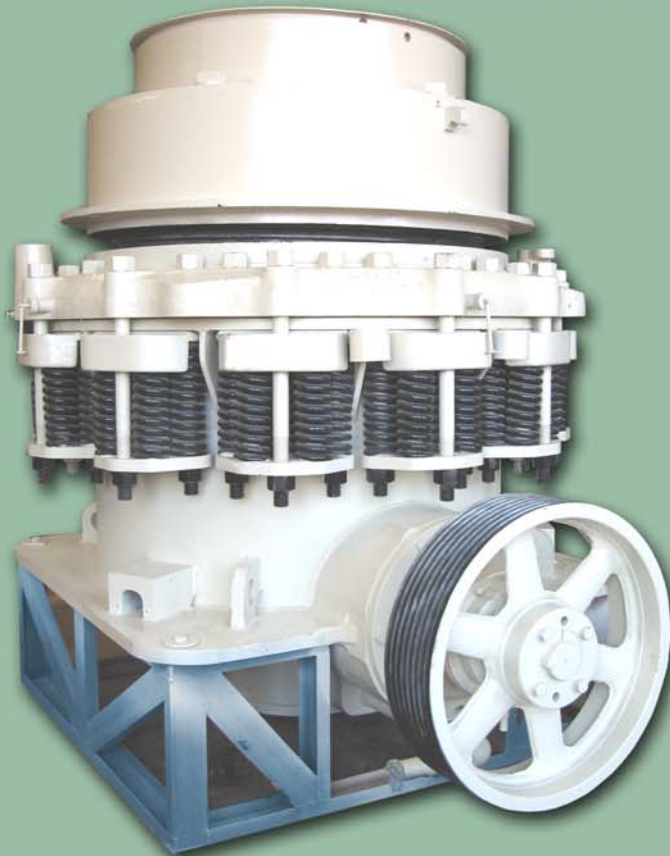




# PORT & QUARRY SUPPLIES LTD

## 4 1/4 FT CONE CRUSHERS



### 4 1/4 ft CONE CRUSHERS

Machines available in standard & shorthead configuration.

Multiple wear liner options are available to suit customers applications.

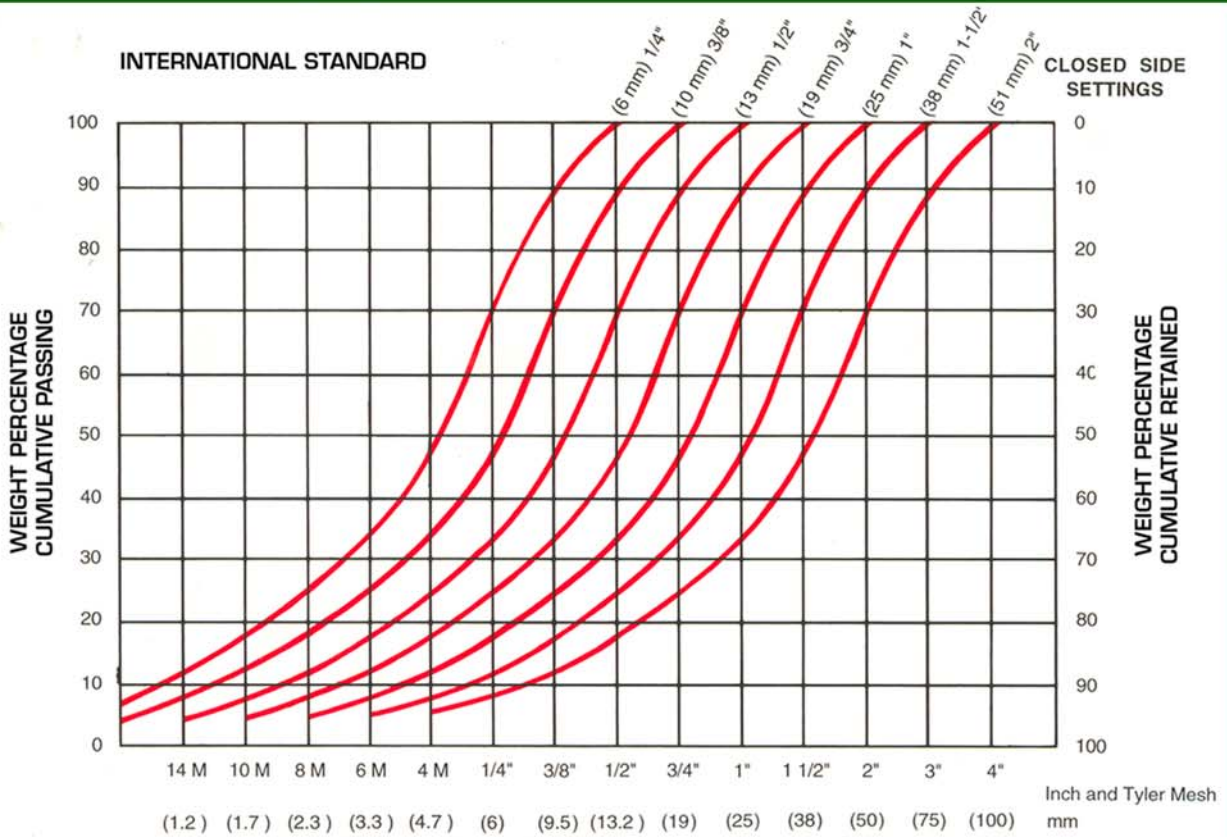
#### 4 1/4 ft CONE CRUSHER CAPACITY CHART

CONE CRUSHER - CAVITIES FEED OPENINGS PRODUCT SIZES CAPACITIES

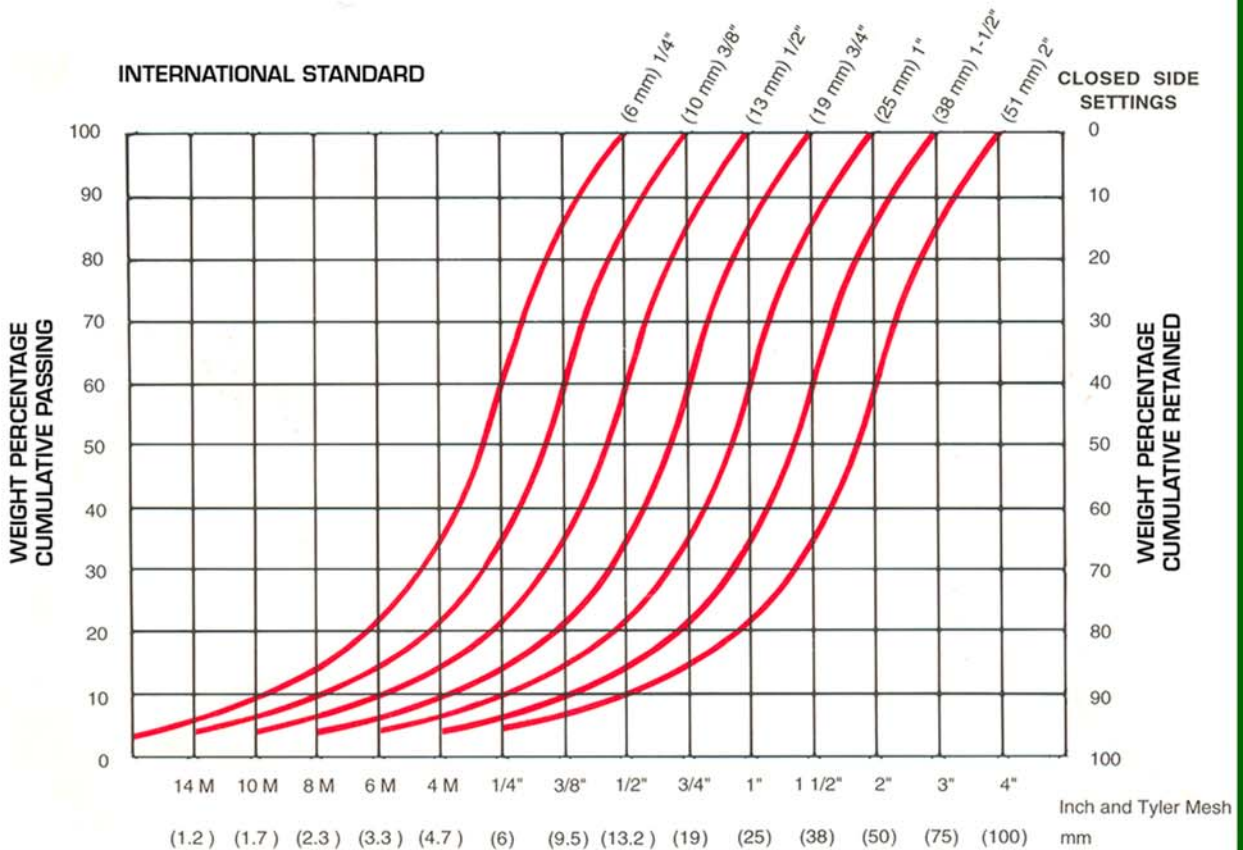
OPEN CIRCUIT - CAPACITIES IN TONNES PER HOUR PASSING THROUGH THE CRUSHER AT INDICATED DISCHARGE SETTING "A"

STANDARD	SIZE	Type of cavity	Recommended minimum discharge setting A	Feed opening with min. recommended discharge setting A		6mm (1/4")	9mm (3/8")	13mm (1/2")	16mm (5/8")	19mm (3/4")	22mm (7/8")	25mm (1")	31mm (1 1/4")	38mm (1 1/2")	51mm (2")	
				B	B											
				Closed side	Open side											
4 1/4 ft	Fine	13mm (1/2")	109mm (4 3/8")	137mm (5 3/8")				105	125	145	155	160	180			
	Medium	16mm (5/8")	188mm (7 1/2")	210mm (8 1/4")				130	155	170	195	195	225	250		
	Coarse	19mm (3/4")	216mm (8 5/8")	241mm (9 5/8")						195	215	250	295	345		
	Extra Coarse	25mm (1")	238mm (9 1/2")	259mm (10 3/8")							230	270	300	355		
OPEN CIRCUIT - CAPACITIES IN TONNES PER HOUR PASSING THROUGH THE CRUSHER AT INDICATED DISCHARGE SETTING "C"																
SHORthead	SIZE	Type of cavity	Recommended minimum discharge setting C	Feed opening with min. recommended discharge setting C		3mm (1/8")	5mm (3/16")	6mm (1/4")	10mm (3/8")	13mm (1/2")	16mm (5/8")	19mm (3/4")	25mm (1")			
				D	D											
				Closed side	Open side											
4 1/4 ft	Fine	3mm (1/8")	29mm (1 1/8")	64mm (2 1/2")	36	58	80	102	135	160						
	Medium	6mm (1/4")	54mm (2 1/8")	89mm (3 1/2")			80	102	135	160						
	Coarse	8mm (5/16")	70mm (2 3/4")	105mm (4 1/8")				105	155	180	195	225				
	Extra Coarse	16mm (5/8")	98mm (3 7/8")	133mm (5 1/4")							205	230				

**AVERAGE MATERIAL**



**HARD MATERIAL**

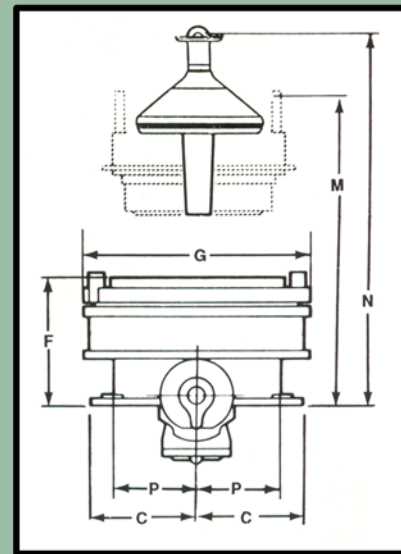
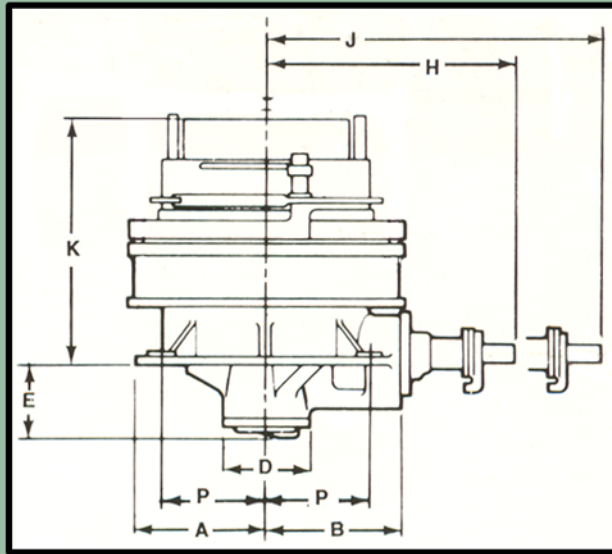


**Port & Quarry  
Supplies**

6 Moira Road, Ashby de la Zouch,  
Leicestershire LE65 2GA  
United Kingdom  
Tel +44(0) 1530 414358  
Fax: +44(0) 1530 414166  
Email sales@pqs.uk.net

# 4 1/4ft CONE CRUSHER

Crusher Size	Crusher Complete	Mainframe, Adj Ring, Step Bearing Plates, Eccentric, Countershaft Box, Countershaft, Crusher Sheave & Socket	Mainframe, Adjustment Ring & Springs	Mainframe, inc. Mainframe Cap, Outer Eccentric Bushing & Mainframe liner	Bowl, Bowl Liner & Adjustment Cap Assembly	Head, Main Shaft, Mantle & Feed Plate Assembly	Countershaft Box & Countershaft Assembly	Eccentric Assembly
Standard Feet (mm)	KGS	KGS	KGS	KGS	KGS	KGS	KGS	KGS
<b>4 1/4 Standard</b>	22,423	13,907	10,962	5,481	4,892	3,624	1,268	1,041
<b>4 1/4 Shorthead</b>	22,559	13,907	10,962	5,481	4,348	4,303	1,268	1,041



Crusher Size	Crusher Centerline to Countershaft Housing Facing	Crusher Centerline to Countershaft Housing Facing	Mainframe Cap Diameter	Base to Bottom of Mainframe Cap	Base to Top of Adjustment Ring	Adjustment Ring Max Diameter	Vertical Centerline to End of Countershaft	Clearance to Remove Countershaft Box Assembly	Max Height Base to Top of Hopper or Lock Post	Clearance to Remove Bowl Assembly	Clearance to Remove Main Shaft Assembly	Foundation Bolt Location	Countershaft R.P.M	Full Load Power (Kw)
Crusher Size	A&C (mm)	B (mm)	D (mm)	E (mm)	F (mm)	G (mm)	H (mm)	J (mm)	K (mm)	M (mm)	N (mm)	P (mm)		
<b>4 1/4 Standard</b>	1016	1117	685	635	1320	2362	1676	2489	2082	3251	3530	883	485	132
<b>4 1/4 Shorthead</b>	1016	1117	685	635	1320	2362	1676	2489	2082	3098	3581	883	485	132

**Port & Quarry Supplies**

6 Moira Road, Ashby de la Zouch,  
Leicestershire LE65 2GA  
United Kingdom  
Tel +44(0) 1530 414358  
Fax: +44(0) 1530 414166  
Email sales@pqs.uk.net